

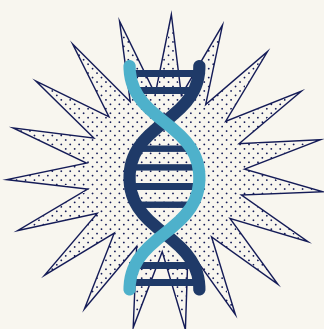
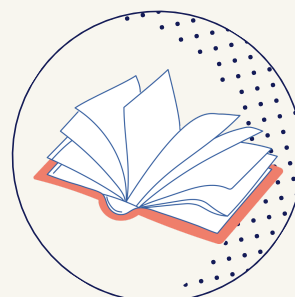


Dyslexia Resources for Parents and Caregivers

We appreciate your child's participation in our research. This list includes resources on dyslexia, specialists who can provide further testing, and locations that can provide early intervention for dyslexia. If you have any questions about the information in this letter, please email dysqsb@gmail.com.

What is Dyslexia?

Dyslexia is defined as an unexpected difficulty in learning to read. Dyslexia takes away an individual's ability to read quickly and automatically, and to retrieve spoken words easily (Yale Dyslexia).



What causes dyslexia?

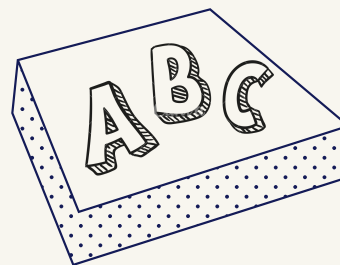
Differences in neurological development and **genetic** factors.

Dyslexia affects 20% of the population (IDA).

Signs of dyslexia

A child with dyslexia may have difficulty with (but not limited to):

- Rhyming
- Spelling
- Learning letter names
- Learning letter sounds
- Learning new words
- Reading words and parts of words
- Understanding what is read
- Reading fluently



General Information



[Dyslexia Basics and Dyslexia Handbook from International Dyslexia Association \(IDA\)](#)

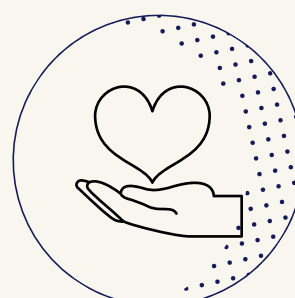
[Dyslexia Resource Guide from AZ Department of Education \(AZDOE\)](#)

[What is Dyslexia? from Yale Center for Dyslexia & Creativity \(YCDC\)](#)

How can I help my child?

Providing your child systematic, explicit reading intervention as soon as possible.

With early intervention and long-term support, a child with dyslexia can learn to read successfully. See: Effective Reading Instruction for Students with Dyslexia (IDA)





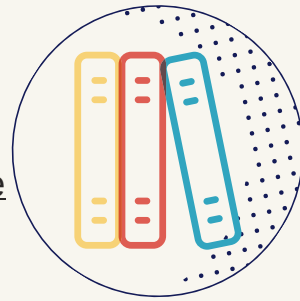
Arizona Department of Education Resources

[AZ Technical Assistance System Evaluation Process](#)

[AZ Dept. of Education Dyslexia Handbook to Support Families and Teachers](#)

[AZ Dept of Education: Dyslexia Resource Guide for Families](#)

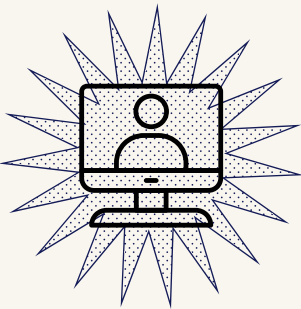
[AZ Dept of Education: Specific Learning Disability–Dyslexia: A Technical Assistance Document to Support Families and Teachers](#)



Online Informational Resources

[International Dyslexia Handbook: What Every Parent Should Know \(IDA\)](#)

- Scholarship support
- AZ chapter: Mary Smith (mary.smith@arizonaيدا.org); Becky Kelley (becky.keller@arizonaيدا.org)



[Dr. Khurana of Healing Hearts Pediatrics](#)

- Personal Website <http://drkhuranababy101.com/>

[Child Mind Institute: Parent Guide to Dyslexia](#)

[Yale Center for Dyslexia and Creativity](#)

[National Center for Learning Disabilities](#)

- Scholarships and Awards, Young Adult Initiative Programs

[Headstrong Nation](#)

[Understood](#)

[Raising Special Kids](#)

Arizona Tutoring Centers

[Dyslexia Pros](#)

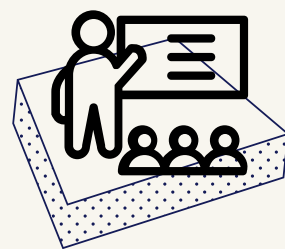
[Dyslexia Connection](#)

[Lindamood Bell Learning Centers](#)

[Pediatric Speech and Language Specialists](#)

[Reading Pro Center](#)

[Wellington- Alexander Center](#)



Local + National Non-profits

[Dyslexia Service Foundation](#)

- Provides funding for dyslexia evaluation and treatment services for children from low-income families

[AZ International Dyslexia Association](#)

- Reimbursement Scholarships available up to \$500 for IDA resources including courses, conferences, workshops, and seminar



[Martin Miracles](#)

- Non-profit organization helping children transform their disabilities into abilities by providing scholarships for tutoring services.

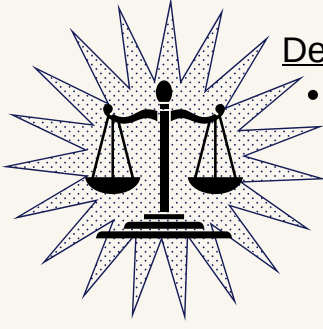


Know Your Rights!

Legal Resources

Wrights Law

- Provides information about special education law and advocacy for children with disabilities



Decoding Dyslexia Arizona

- Raise dyslexia awareness, empower families to support their children and inform policy-makers on best practices to identify, remediate and support students with dyslexia

Arizona Center for Disability Law

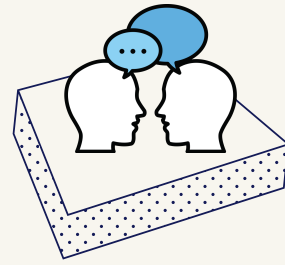
- A Self- Advocacy Guide for Parents of Children with Special Needs
 - Understanding Your Child's Educational Rights
- Has commonly asked questions about educational rights for children with special needs

Developmental Language Disorder Resources for Parents and Caregivers

We appreciate your child's participation in our research. This list includes resources on dyslexia, specialists who can provide further testing, and locations that can provide early intervention for DLD. If you have any questions about the information in this letter, please email dysqsb@gmail.com.

What is Developmental Language Disorder? (DLD)

Developmental Language Disorder (also known as specific language impairment or oral language disorder) is a brain difference resulting in significant impairment in the development and/or use of language. It may involve sounds, grammar, vocabulary, and social use of language. DLD often **co-occurs** with other developmental disorders such as dyslexia and attention deficit hyperactivity disorder (ADHD). Although DLD may be a life-long challenge, there is help available.



DLD Resources



[DLDandMe](#)

[Spoken Language Disorders-ASHA](#)

[The Association for Child and Adolescent Mental Health](#)

[Pediatric Speech and Language Specialists](#)